



**Contact:**

**Shigeo Fukushima**  
 Managing Director  
 T: +81.3.3221.4939  
[fukushima@recof.co.jp](mailto:fukushima@recof.co.jp)

**Tamotsu Majima**  
 Director  
 T: +81.3.3221.4948  
[majima@recof.co.jp](mailto:majima@recof.co.jp)

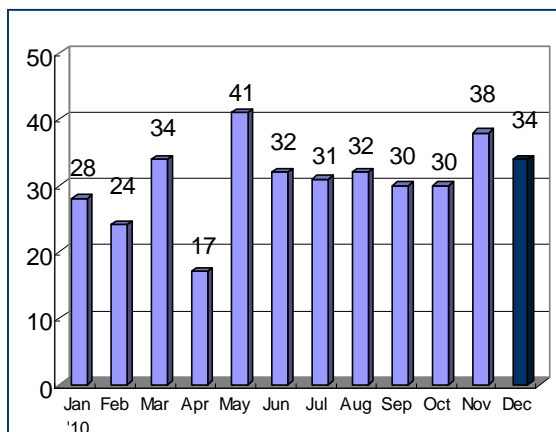
**Noriaki Nakajima**  
 Vice President  
 T: +81.3.3221.8040  
[n.nakajima@recof.co.jp](mailto:n.nakajima@recof.co.jp)

**Keiko Hasegawa**  
 Research associate  
 T: +81.3.3221.4905  
[hasegawa@recof.co.jp](mailto:hasegawa@recof.co.jp)

**RECOF Corporation**  
 4-1-1 Kojimachi  
 Chiyoda-ku, Tokyo  
 102-0083 JAPAN  
 T: +81.3.3221.4930  
 F: +81.3.3221.0778  
[www.recof.co.jp](http://www.recof.co.jp)  
[www.globalma.com/global\\_ma\\_japan](http://www.globalma.com/global_ma_japan)

**Market Data: December 2010**

**In-Out (Outbound): No. of deals**



Full year 2010: 371 deals (+24.1%)  
 JPY3,665 billion (+26.8%)

**In-Out Announced Deals**

**Harima Chemical Inc., Mitsubishi Corp. / Momentive Specialty Chemicals (US)**  
 Harima Chemical and Mitsubishi Corp. jointly acquire the rosin business of Momentive Specialty Chemicals, an Ohio-based resin company through the newly established company, Lawter Inc. Momentive's target business has the top market share for rosin-based printing ink resins.

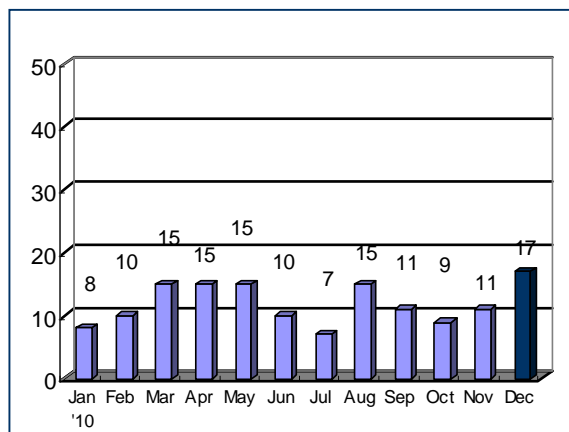
**FUJIFILM Electronic Materials USA (FUJIFILM Corporation) / Planar Solutions (US)**

FUJIFILM Corporation through its US subsidiary acquires Planar Solutions, manufacturer of CMP slurry for semiconductor, from its German parent company, Wacker Chemical Corporation, by increasing its stake in Planar Solutions from 50% to 100%. The company will be renamed as "FUJI FILM Planar Solutions, LLC".

**Mitsubishi Power Systems Europe (Mitsubishi Heavy Industries) / Artemis Intelligent Power (UK)**

Mitsubishi Heavy Industries purchases all shares of a British hydraulic power system development company, Artemis Intelligent Power, through its wholly-owned subsidiary Mitsubishi Power System Europe for approx. GBP 15 million. MHI is aiming to accelerate its entry into the offshore wind power farm

**Out-In (Inbound): No. of deals**



Full year 2010: 143 deals (+3.6%)  
 JPY435 billion (-36.3%)

Source: RECOF DATA Corporation

market by developing new wind turbines incorporating Artemis' hydraulic drive technology.

**Nikko Asset Management / DBS Asset Management (Singapore)**

Nikko Asset Management, owned by The Sumitomo Trust & Banking, buys DBS Asset Management from the leading Singaporean bank, DBS Bank. In return, DBS Bank becomes a strategic minority shareholder in Nikko AM by taking a 7.25% stake. This transaction adds about JPY 600 billion in assets under Nikko AM's portfolio. Nikko AM aims to broaden its distribution capabilities by using DBS networks in Asia.

**Advantest Corporation / Verigy (US)**

Advantest, the world's No. 2 maker of semiconductor testing system, made a proposal to acquire Verigy, the No. 3 Nasdaq-listed company with the sales of USD 323 million. The transaction will create the largest LSI testing system manufacturer surpassing Teradyne. The deal value is estimated at approx. USD 908 million, which reportedly includes breakup fee for the planned deal with LTX, the No. 4 player.

**Olympus / Stryker Biotech (US)**

Olympus, maker of cameras and precision instruments, acquires through its US

January 2011

## In-Out Announced Deals (Continued)

subsidiary the assets relating to the development, manufacture and sale of Osteogenic Protein-1 (OP-1) in the bone field from the US-based Stryker Biotech. Olympus endeavors to boost its regenerative medicine business by combining the assets with its existing biomaterial and regenerative medicine technologies of the group.

### **Sumitomo Corporation / Morycorp (US)**

A Japanese leading trading company signs the MOU regarding a USD 130 million financing to Morycorp, a Colorado-based rare earth company, for the restart of Morycorp's rare earth mine and the existing rare earth production plant, construction of a new plant and the supply of Morycorp-produced rare earth to Japan. This will be the first case of the large-scale supply of rare earth to Japan from a country other than China.

### **Kansai Paint / Freeworld Coatings (South Africa)**

Kansai Paint proposed to buy the leading South African paint company, Freeworld Coatings, by tender offer. Kansai Paint obtains the consent of the company's four major shareholders owning a total of 36% stake in the company. The purchase price is expected to be up to ZAR 180 million (approx. USD 270 million). Freeworld Coating's board does not agree with the proposal. Kansai Paint's objective of the acquisition is to secure the business base in the growing market in South Africa and other developing economies.

### **KDDI / KKBOX (Taiwan)**

KDDI, one of Japan's leading telecommunications companies, purchases KKBOX, the digital music distribution service provider in Taiwan by acquiring a 76% stake for approx. JPY 5 billion. KDDI intends not only to enhance the content provider business to smartphone users by using KKBOX's service delivery platform but also to enter the China market.

### **The Dai-ichi Life Insurance / Tower Australia Group (Australia)**

A Japan's leading life insurer enters into Scheme Implementation Deed to acquire the rest of the shares of the Australian life insurer, Tower Australia Group, in which Dai-ichi holds a 28.96% stake. Under "the scheme of arrangement," the acquisition becomes effective when 75% or more of the shareholders and Australian court approve the transaction. The deal is the largest acquisition of the overseas insurer ever made by the Japanese insurance companies.

## Out-In Announced Deals

### **Hach (Danaher, US) / DKK-Toa**

Hach, a wholly-owned subsidiary of Danaher Corporation and a maker of analytical instrument for water quality, increases its stake in DKK-Toa, a listed Japanese manufacturer of analytical instrument for environmental market, from 18.12% to 22.39% by acquiring new shares worth JPY 1.08 billion. On the same date, DKK-Toa cancels its treasury shares and Hach's stake in DKK-Toa goes up to 33.5%. The transaction is part of the DKK-Toa's growth strategies toward globalization.

### **Stokke AS (Norway) / Stokke Japan (Matsuya)**

The Norwegian furniture company sets up a Japanese subsidiary to purchase the whole business from Stokke Japan, importer and distributor of its branded products and the subsidiary of department store group Matsuya, for JPY 300 million. The Norwegian company enters the Japanese market by its own operations.

## Top 10 IN-OUT Deals in 2010

	USD -M	Acquirer (JPN)	Target
1	5,903	The Bank of Tokyo Mitsubishi UFJ	The Royal Bank of Scotland (project finance business) (GBR)
2	4,779	Mitsui E&P USA LLC	Anadarko Petroleum Corp (natural gas interest) (USA)
3	4,468	Astellas US Holding	OSI Pharmaceuticals (USA)
4	3,446	NTT	Dimension Data (RSA)
5	2,169	Shiseido Americas Corp	Bare Escentuals (USA)
6	2,080	Sumitomo Corporation	Mineração Usiminas (Usiminas)(BRA)
7	1,270	The Dai-ichi Life Insurance	Tower Australia Group (AUS)
8	1,205	NTT Data	Keane International (USA)
9	1,071	Daiwa Securities Capital Markets	KBC Group (BEL)
10	1,019	Kirin Holdings	Fraser and Neave (SIN)

Note: converted at 1US\$=JPY83

Source: RECOF DATA Corporation